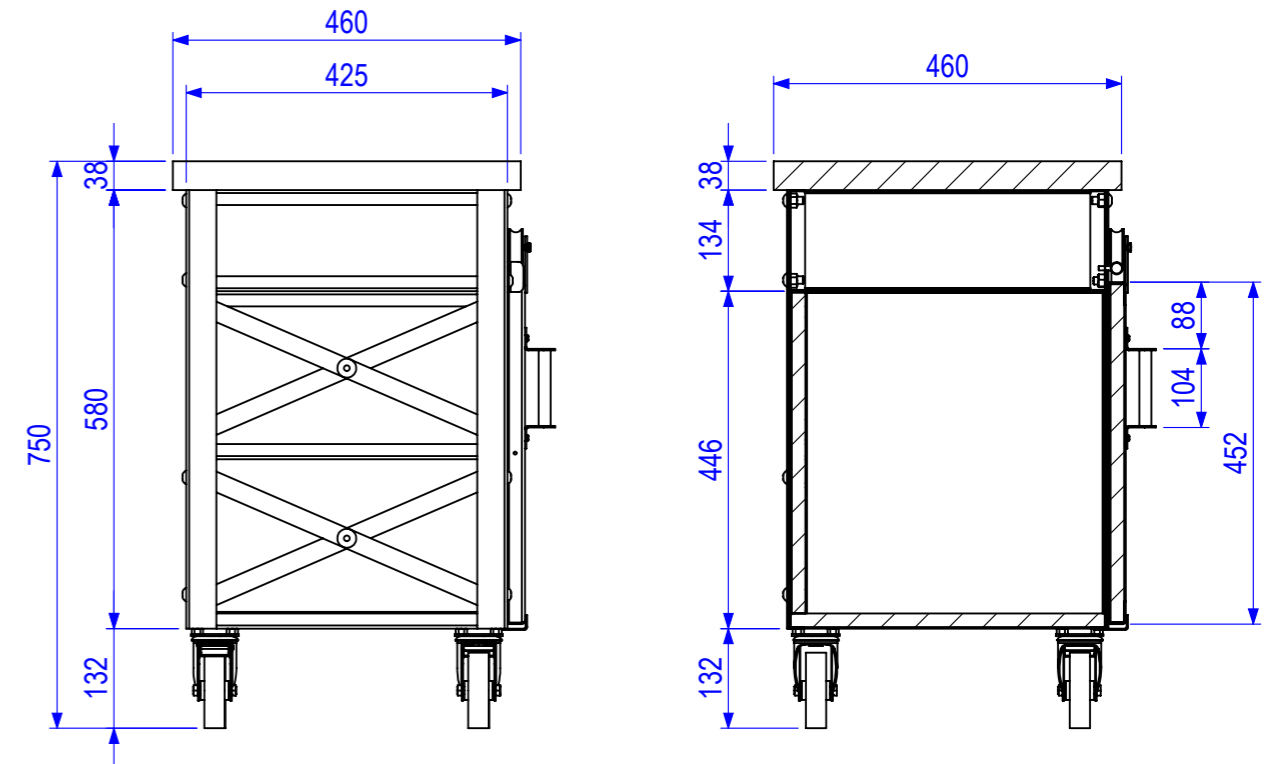
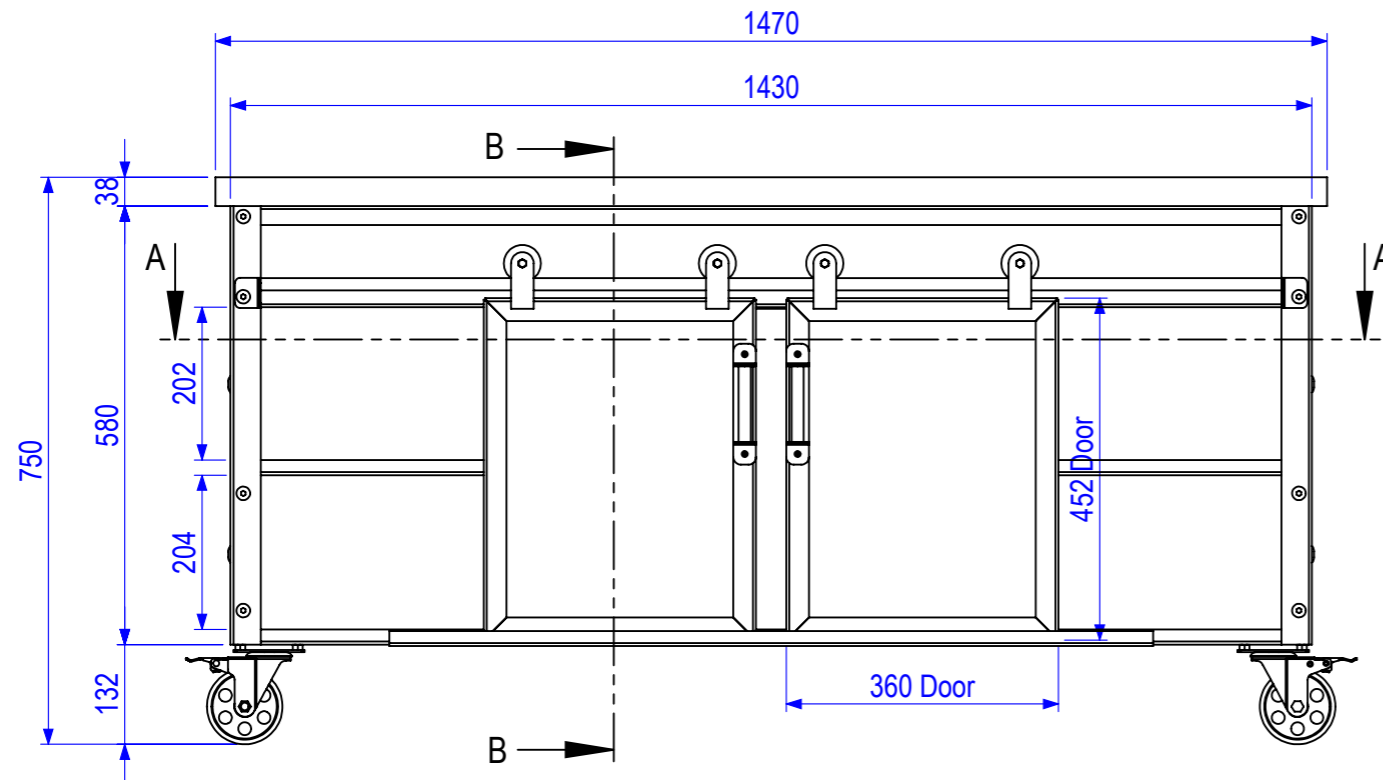
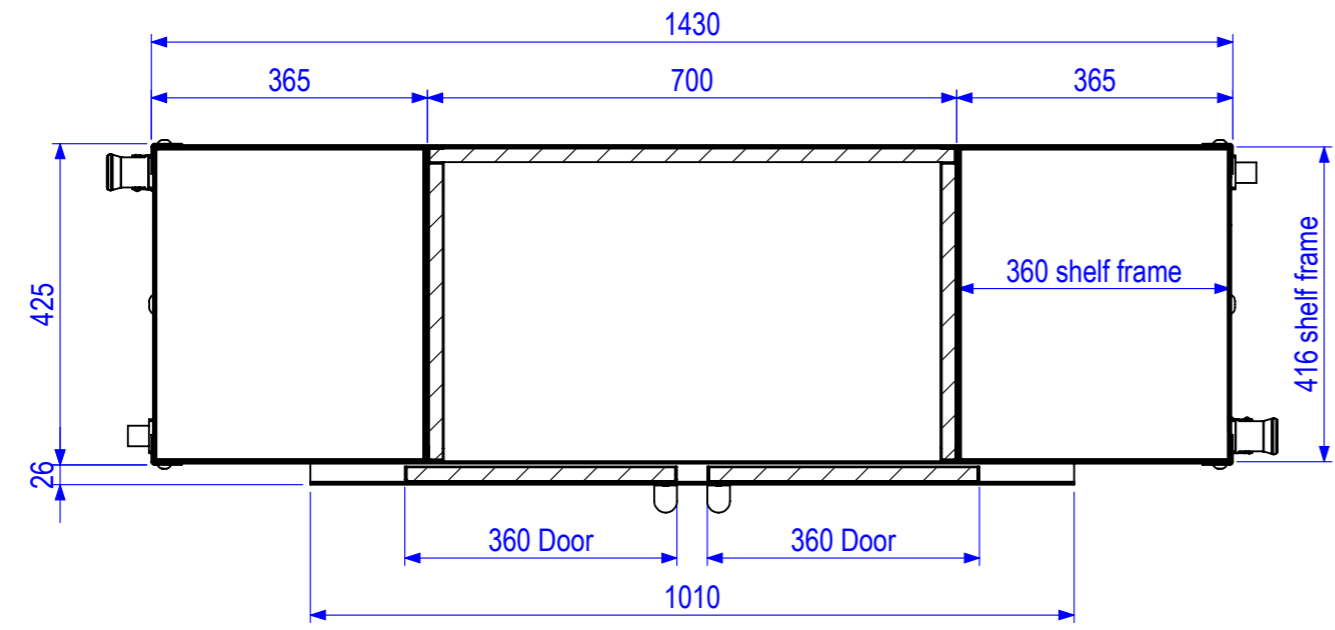
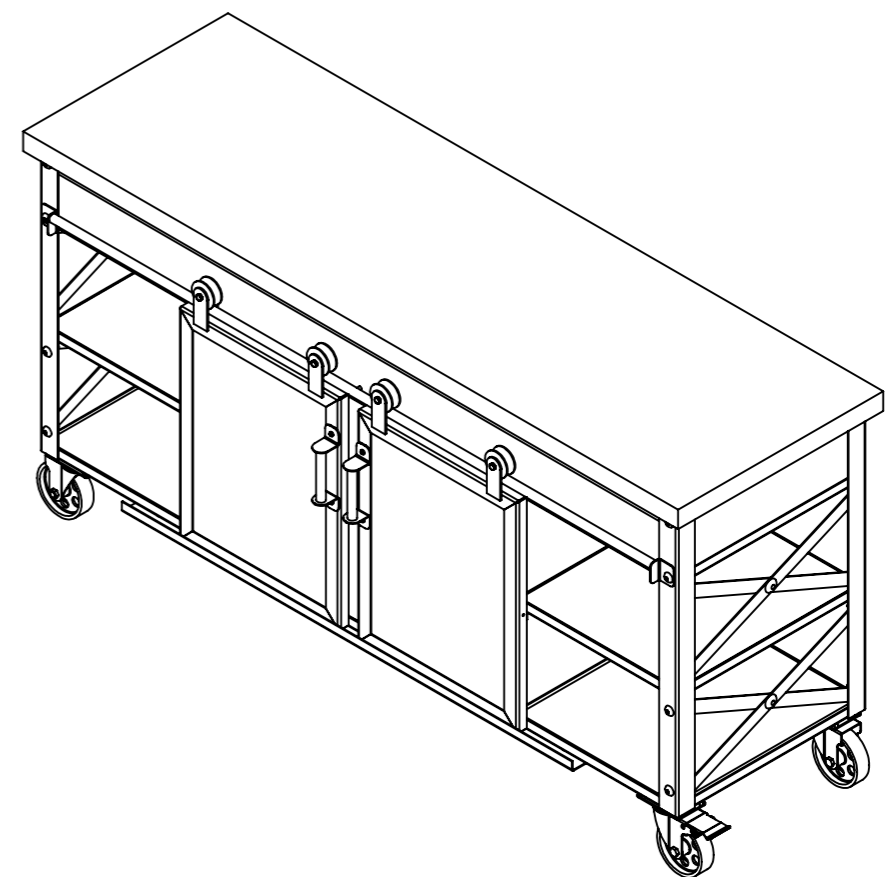
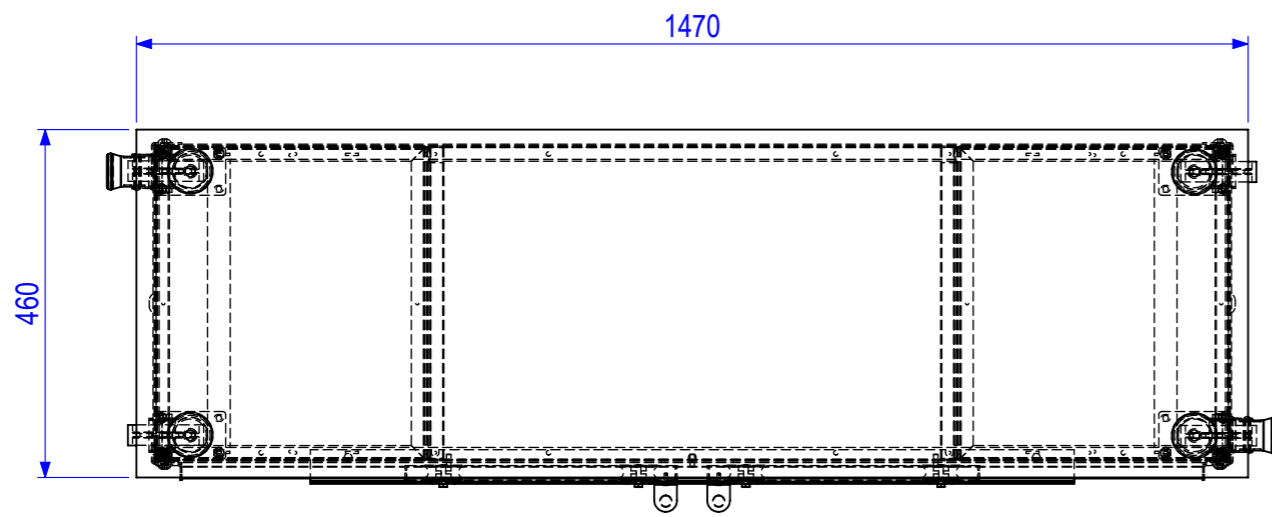


T:\DesignCommon\1.Design & Development\DATAS\USA New Products 2020\USA New Products 2020\GARAGE CONSOLE\Drawing By Tahir\Console Table\



SECTION B-B



SECTION A-A

DRAWN	Tahir	SHEET THK.:	-NA-	WEIGHT:	---	S. AREA:	9355128.25mm ²
CHECKED	Harout k	MAT.:	Acacia wood / Metal	FINISH:	Powder coated		
APPROVED	Harout k	TITLE: FarmHouse Cabinet					
DATE	14/12/2020						
DWG. NO.	Garage Console	PROJECT:	USA GARAGE	MODEL:	1470x460x750		
General Tolerance : ± 0.1 mm				P.O. Box 474039, Jabel Ali, Dubai Investment Park - 1, Dubai (United Arab Emirates) Tel: 04-8841650 Fax: 04-8841934		SHEET 1 OF 26	
COLOUR		Design & Development Department				SCALE	REV.
QUANTITY	01	ALL DIMENSIONS ARE IN MILLIMETERS AND ALL BEND RADII TO BE MIN. R AT 90° BEND, UNLESS SPECIFIED OTHERWISE THIS DRAWING IS THE PROPERTY OF TSSC, NOT TO BE REPRODUCED AS A PART OR WHOLE WITHOUT PRIOR CONSENT OF TSSC		N.T.S.		00	